

MONTHLY MEMBERSHIP PROGRESS REPORT

LOCATION INDIA

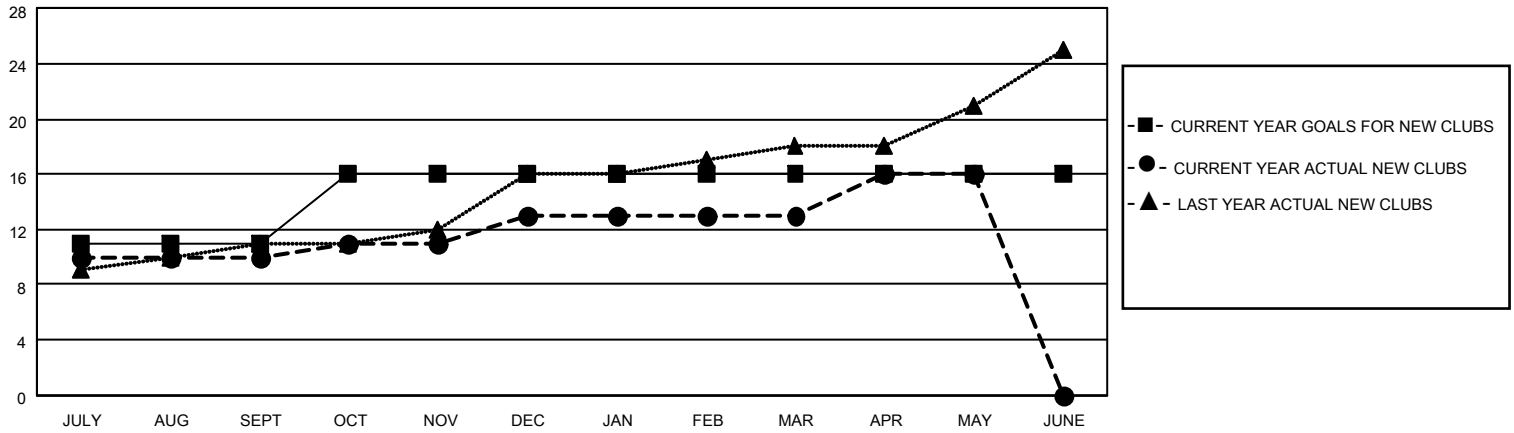
District 321A2

Results as of: 5/31/2022

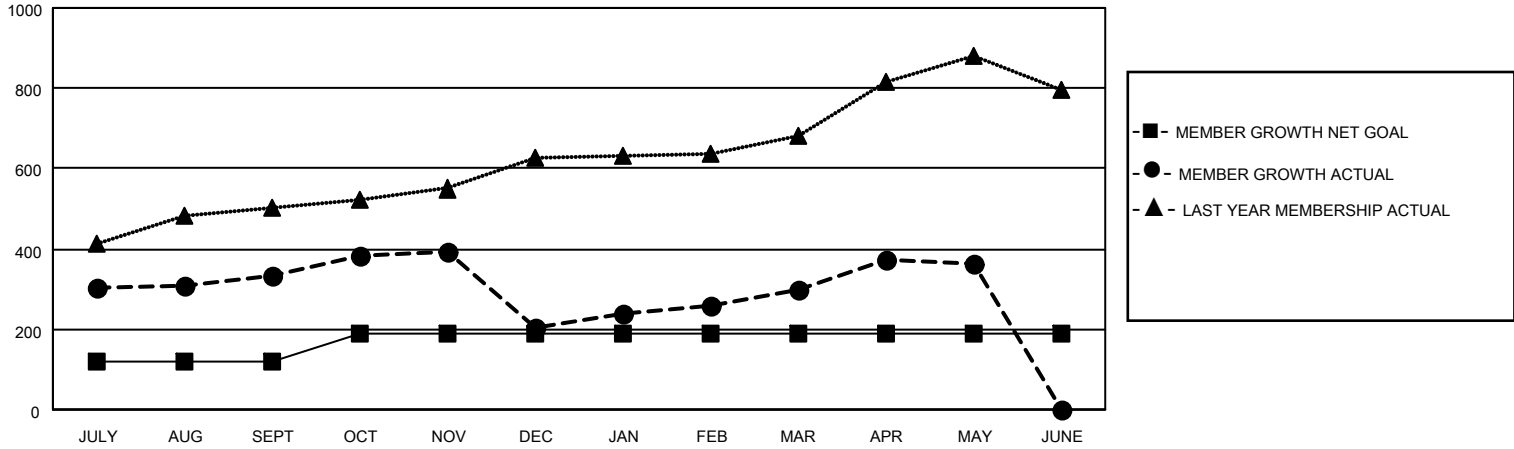
Clubs			
RESULTS FOR 2021-2022			
QUARTER	NEW CLUB GOAL	NEW CLUBS	DROPPED CLUBS
JULY/AUG/SEPT	11	10	4
OCT/NOV/DEC	5	3	7
JAN/FEB/MAR	0	0	3
APR/MAY/JUNE	0	3	2

Members			
RESULTS FOR 2021-2022			
QUARTER	MEMBER GROWTH NET GOAL	MEMBER GROWTH ACTUAL	DROPPED MEMBERS ACTUAL (including transfers)
JULY/AUG/SEPT	120	508	144
OCT/NOV/DEC	70	221	338
JAN/FEB/MAR	0	325	137
APR/MAY/JUNE	0	164	96

GOALS AND ACTUAL NEW CLUBS CUMULATIVE



GOALS AND ACTUAL MEMBERS CUMULATIVE



DROPPED CLUBS: 16

96 CLUBS OF 166 ADDED 1 OR MORE NEW MEMBERS

GENDER DISTRIBUTION

MALE	2,776 (64.53%)
FEMALE	1,526 (35.47%)
NON BINARY	0 (0.00%)
PREFER NOT TO ANSWER	0 (0.00%)

DROPPED MEMBERS

[CLICK HERE FOR CUMULATIVE MEMBERSHIP DATA](#)

DECEASED	11
CLUB CANCELLED	193
OTHER	511
TOTAL	715

TOTAL FAMILY UNIT MEMBERS 3,088

FAMILY MEMBERS PAYING HALF DUES 1,866